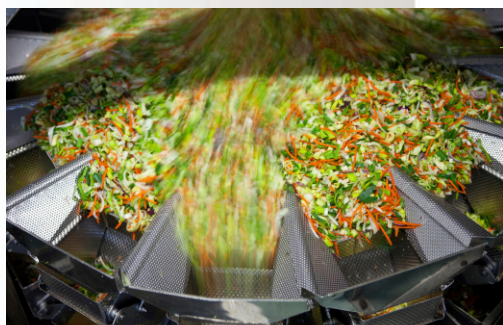


Boston Gear

Stainless Steel Motors

Value Engineered for Washdown Performance



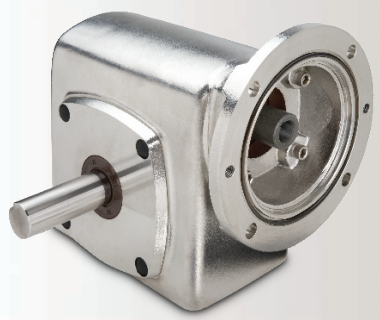
Designed to provide maximum corrosion resistance in caustic washdown environments.

Exterior Construction

300 Series stainless steel housing, end bells, output shafts and conduit box

Interior Features

- Conforms to 2007 EISA efficiency standards
- Inverter Duty
- Class F insulation
- Class "B" rise @ 1.15 service factor
- Epoxy-coated windings
- Internally-locked bearings to eliminate unwanted axial movement



The ultimate combination of 700 Series and SS motors for elite washdown performance.



An Altra Industrial Motion Company



Stainless Steel Motors

UL / ULc Certified

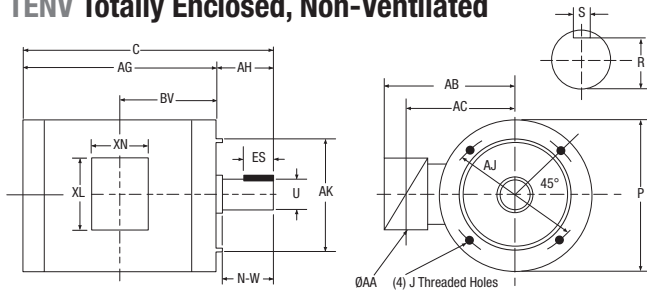
Performance Data

Part #	HP	Type	RPM	Frame	Voltage AC	Efficiency*	Full Load Amps (230/460)	Weight (lbs.)	Bearings
FUTSS	0.5	TENV	1720	56C	208-230/460-3-60	81.2%	1.62/0.81	28	6205
GUTSS	0.75	TENV	1720	56C	208-230/460-3-60	81.5%	2.44/1.22	31	6205
HUT-5/8SS	1	TENV	1720	56C	208-230/460-3-60	82.5%	3.04/1.52	35	6205
HUTF-5/8SS	1	TEFC	1720	56C	208-230/460-3-60	84.0%	3.10/1.60	35	6205
HUTSS	1	TENV	1720	143TC	208-230/460-3-60	82.5%	3.04/1.52	35	6205
HUTFSS	1	TEFC	1720	143TC	208-230/460-3-60	84.0%	3.10/1.45	35	6205
JUTFSS	1.5	TEFC	1720	145TC	208-230/460-3-60	84%	4.24/2.12	42	6205
KUTFSS	2	TEFC	1720	145TC	208-230/460-3-60	84%	5.44/2.77	49	6205
LUTFSS	3	TEFC	1765	182TC	208-230/460-3-60	87.5%	8.0/4.0	81	6308

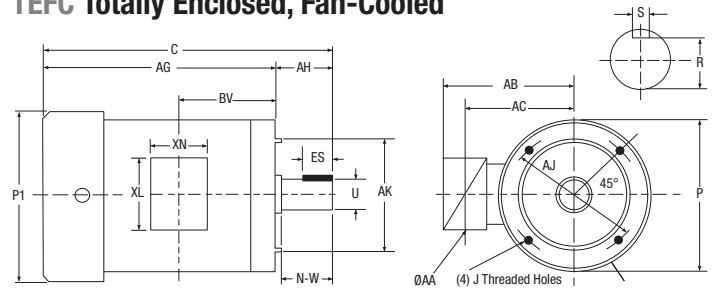
Ratings are for continuous duty at Max Ambient Temperature of 40°C
 TENV = Totally enclosed, non-ventilated
 TEFC = Totally enclosed, fan-cooled

All motors are inverter-duty rated at Service Factor of 1.15
 Motors can be run at 50 Hz with a derating factor applied
 *Efficiency meets or exceeds 2007 EISA standards

TENV Totally Enclosed, Non-Ventilated



TEFC Totally Enclosed, Fan-Cooled



Dimensions (in.)

Catalog No.	HP	Frame	Mounting				Conduit Box					
			C	P	P1	AG	AA	AB	AC	BV	XL	XN
FUTSS	1/2	56C	9.64	6.45	—	7.58	0.87	5.43	4.65	5.33	4.40	3.81
GUTSS	3/4	56C	9.64	6.45	—	7.58	0.87	5.43	4.65	6.33	4.40	3.81
HUT-5/8SS	1	56C	10.77	6.45	—	8.64	0.87	5.43	4.65	6.33	4.40	3.81
HUTF-5/8SS	1	56C	11.59	—	7.35	9.53	.87	5.43	4.65	6.33	4.40	3.81
HUTSS	1	143TC	10.77	6.45	—	8.64	0.87	5.43	4.65	6.33	4.40	3.81
HUTFSS	1	143TC	12.63	—	7.35	10.51	.87	5.43	4.65	6.33	4.40	3.81
JUTFSS	1-1/2	145TC	13.50	6.45	7.35	11.38	0.87	5.43	4.65	7.44	4.40	3.81
KUTFSS	2	145TC	13.78	6.45	7.35	11.65	0.87	5.43	4.65	7.44	4.40	3.81
LUTFSS	3	182TC	17.40	6.45	7.35	14.27	0.94	7.60	5.30	8.75	4.45	4.05



www.bostongear.com

701 Carrier Drive
 Charlotte, NC 28216-USA
 704-588-5610
 Fax 704-588-7181

Customer Service:
 800-825-6544
 Application Assistance:
 800-816-5608

P-7358-BG 8/12 Printed in USA