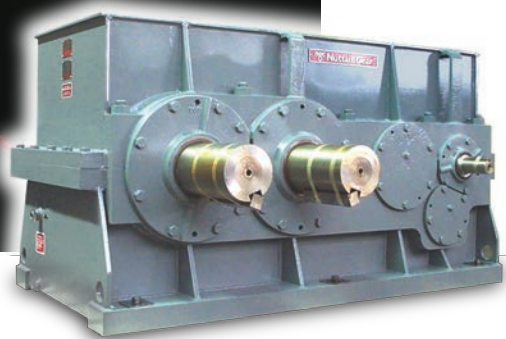




**Custom
Engineered
Gear Drives
for the
Metals
Industry**



An Altra Industrial Motion Company

Innovation and Excellence— The Tradition Continues

The R. D. Nuttall Company was founded by Mr. R. D. Nuttall in 1887 with one gear cutter, five men, and a combined capital of five hundred dollars.

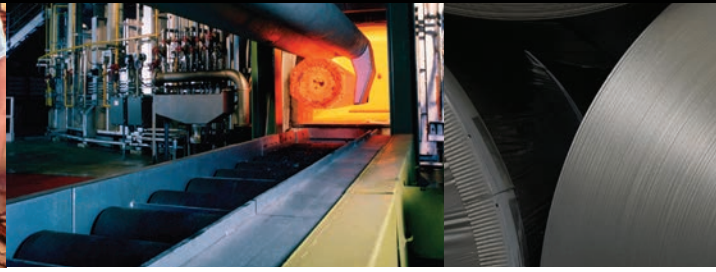
From this modest beginning, the company grew and prospered, and over the next forty-two years made numerous contributions to the gear industry. It was Nuttall that developed flexible gearing for transportation applications, forced feed lubrication for large industrial enclosed gear drives, and manufactured the first integral type gearmotor. In addition, Nuttall made one of the most significant contributions to the field of gear engineering: single helical gears.

In 1928, Westinghouse Electric Corporation purchased the business from Mr. Nuttall. Although the name changed, the original commitment to excellence did not. Nuttall was known for its innovation and engineering, for it was our company that developed the modern form of the gearmotor which is used by gear manufacturers all over the world today.

February 1983 signified yet another step forward in Nuttall Gear's history. At the time, we once again became a privately held corporation, continuing the tradition of leading the industry in technology— such as pioneering the use of iron-nitriding for heat treating, and the use of our MAAG SP-160, the ultimate machine available to confirm gear quality.

In 2004, Nuttall Gear became part of the Altra Industrial Motion group of companies.

While there have been corporate changes over the years, some things never change— such as the need for durable, dependable gears, and our commitment to excellence in both product and service.



Nuttall Gear—



- supplies the metals industry with a wide variety of gear drives for its many different applications. Combination reducer/pinion stands, separate pinion stands, pinch roll drives, flattener drives, and single and multi-speed recoilers and uncoilers have all been produced for mills and processing lines all over the world. Features such as hollow-bored low speed shafts, provisions for stripping mechanisms and hold-down rolls are designed to customer requirements.

- will custom design and manufacture units to your requirements or we will manufacture them to your design. We combine our extensive application experience and computer assisted design technology to produce reliable enclosed gear drives for all of your ferrous and non-ferrous material processing requirements.

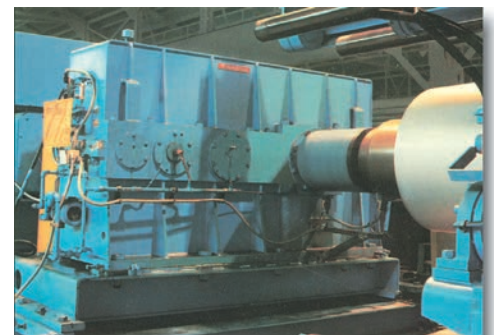
- is recognized world-wide as a high quality supplier of gear drives and specialized gearing services for the metals, paper, plastic, rubber, material handling, and process industries. From the standard to the custom design, we provide the broadest product line capability in the industry. Our Maag gear checker helps to insure the quality and accuracy of our gear products.

“Total Drive Source” is more than a slogan.

We are the only company that specializes in providing complete packaged assemblies of both mechanical and electrical drive components. You receive it ready to run, not ready to assemble. You will also find our composite drawings are the best around. This level of quality service is not available from any other company in the world.

Nuttall Gear is a customer-driven company with a history of high standards and performance...and we work to keep it that way.

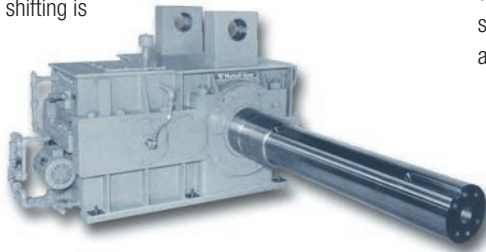
You can count on it.



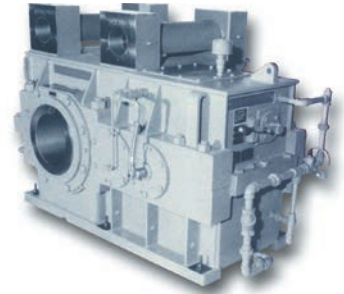


Our Products

Size 2ST15R Two-Speed Recoiler Drive with customer specified mandrel shaft, stripper blocks, self-contained lubrication system, and manual shifter. (Pneumatic and hydraulic shifting is also available)



Size 2ST15R Two-Speed Recoiler Drive with customer specified mandrel shaft, stripper blocks, self-contained lubrication system, and manual shifter. (Pneumatic and hydraulic shifting is also available)

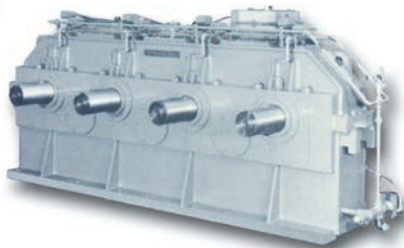


2-Speed, Twin-Pin Mill Stand Drive with pneumatic shifter and force-feed lube system.

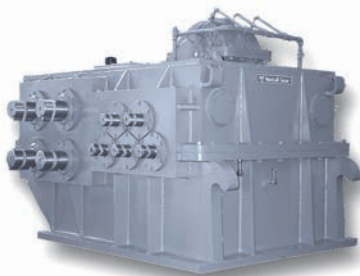
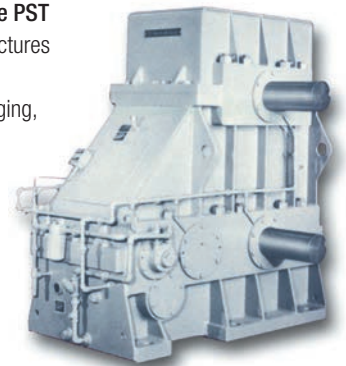


Nuttall Gear's **"Zero Backlash" Slitter Drive**, size WS12/11. Nuttall Gear also designs "zero" or "limited" backlash Shear and Scrap Chopper drives.

Straightener Drive with force feed lubrication system. Nuttall Gear will custom engineer any multiple drive shaft configuration required.

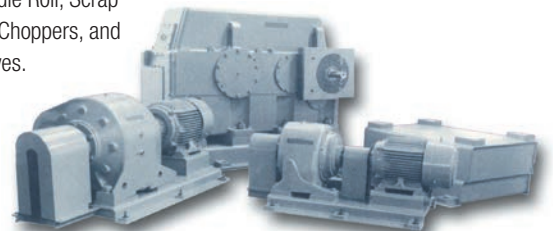


Pinion Stand drive, size PST 36. Nuttall Gear manufactures pinion stand drives for Roughing, Reducing, Edging, Finishing, and Forming.



Leveler or Flattener Drive. Nuttall Gear custom designs multi-shaft drives to our customer's specific roll separation requirements.

TDS / HPD parallel shaft and MODULINE® Concentric Shaft Reducers in engineered package assemblies for Bridle Roll, Scrap Conveyors, Scrap Choppers, and Run-Out Table drives.



Altra Industrial Motion

All Customer Service phone numbers shown in bold>

Electromagnetic Clutches and Brakes**Warner Electric***Electromagnetic Clutches and Brakes*New Hartford, CT - USA
1-800-825-6544*For application assistance:*
1-800-825-9050St Barthelemy d'Anjou, France
+33 (0) 2 41 21 24 24*Precision Electric Coils and Electromagnetic Clutches and Brakes*Columbia City, IN - USA
1-260-244-6183**Matrix International***Electromagnetic Clutches and Brakes, Pressure Operated Clutches and Brakes*Brechin, Scotland
+44 (0) 1356 602000New Hartford, CT - USA
1-800-825-6544**Inertia Dynamics***Spring Set Brakes; Power On and Wrap Spring Clutch/Brakes*New Hartford, CT - USA
1-800-800-6445**Linear Products****Warner Linear***Linear Actuators*Belvidere, IL - USA
1-800-825-6544*For application assistance:*
1-800-825-9050St Barthelemy d'Anjou, France
+33 (0) 2 41 21 24 24**Couplings****Ameridrives Couplings***Mill Spindles, Ameriflex, Ameridisc*Erie, PA - USA
1-814-480-5000*Gear Couplings*San Marcos, TX - USA
1-800-458-0887**Bibby Transmissions***Disc, Gear, Grid Couplings, Overload Clutches*Dewsbury, England
+44 (0) 1924 460801Boksburg, South Africa
+27 11 918 4270**TB Wood's***Elastomeric Couplings*Chambersburg, PA - USA
1-888-829-6637 – Press #5*For application assistance:*
1-888-829-6637 – Press #7*General Purpose Disc Couplings*San Marcos, TX - USA
1-888-449-9439**Ameridrives Power Transmission***Universal Joints, Drive Shafts, Mill Gear Couplings*Green Bay, WI - USA
1-920-593-2444**Huco Dynatork***Precision Couplings and Air Motors*Hertford, England
+44 (0) 1992 501900Charlotte, NC - USA
1-800-825-6544**Heavy Duty Clutches and Brakes****Wichita Clutch***Pneumatic Clutches and Brakes*Wichita Falls, TX - USA
1-800-964-3262Bedford, England
+44 (0) 1234 350311**Twiflex Limited***Caliper Brakes and Thrusters*Twickenham, England
+44 (0) 20 8894 1161**Industrial Clutch***Pneumatic and Oil Immersed Clutches and Brakes*Waukesha, WI - USA
1-262-547-3357**Gearing****Boston Gear***Enclosed and Open Gearing, Electrical and Mechanical P.T. Components*Charlotte, NC - USA
1-800-825-6544*For application assistance:*
1-800-816-5608**Bauer Gear Motor***Gearred Motors*Esslingen, Germany
+49 (711) 3518-0**Nuttall Gear and Delroyd Worm Gear***Worm Gear and Helical Speed Reducers*Niagara Falls, NY - USA
1-716-298-4100**Overrunning Clutches****Formsprag Clutch***Overrunning Clutches and Holdbacks*Warren, MI - USA
1-800-348-0881 – Press #1*For application assistance:*
1-800-348-0881 – Press #2**Marland Clutch***Roller Ramp and Sprag Type Overrunning Clutches and Backstops*South Beloit, IL - USA
1-800-216-3515**Stieber Clutch***Overrunning Clutches and Holdbacks*Heidelberg, Germany
+49 (0) 6221 30 47 0**Belted Drives and Sheaves****TB Wood's***Belted Drives*Chambersburg, PA - USA
1-888-829-6637 – Press #5*For application assistance:*
1-888-829-6637 – Press #7**Engineered Bearing Assemblies****Kilian Manufacturing***Engineered Bearing Assemblies*Syracuse, NY - USA
1-315-432-0700*For information concerning our sales offices in Asia Pacific check our website*
www.altramotion.com.cn

An Altra Industrial Motion Company

www.nuttallgear.com2221 Niagara Falls Boulevard
Niagara Falls, NY 14302 - USA
716-298-4100
Fax: 716-298-4101